
Adobe Photo Deluxe Editing and Saving

The first action to perform with Adobe involves getting your picture. Like most programs, you can scan from within the program, download photos from camera or simply open an already saved picture.

- ▶ Click on Get Photo and then the appropriate item from the secondary menu



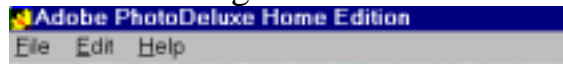
When you first open your photo, you will have a screen similar to this (note that Adobe Photo Deluxe 2.0 differs only in cosmetics at this point)



Notice the “Advanced Menus” option in the lower left of the above screen.

Before you do anything with Adobe, enable the advanced menus option. This provides access to many more features within Adobe that will be used later. At first glance, enabling them appears to do nothing, but look closely at the menu bar:

Before enabling “Advanced Menus”

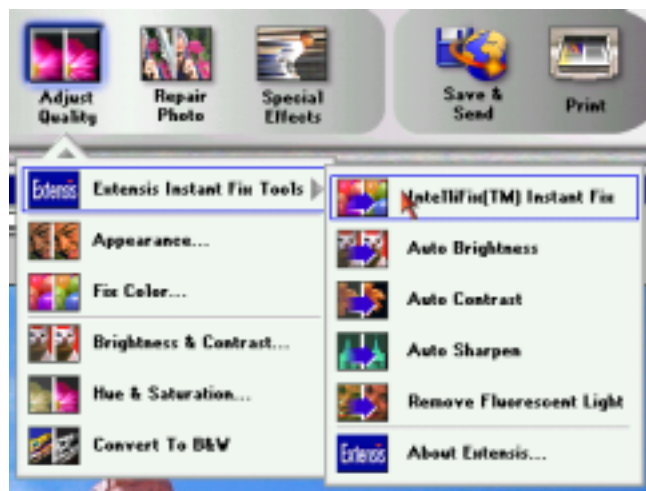


After enabling “Advanced Menus”



NOTE: In Adobe 2.0, the advanced menus also changes the toolbar at the top of the screen

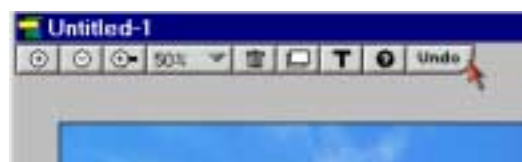
Editing and Saving your Photos



If your photo needs a little help with brightness or lighting, head straight for Adobe’s IntelliFix feature (it’s called Instant Fix in 2.0)

This tool attempts to make all the right changes to your photo in terms of brightness, color and contrast

- ▶ If you don’t like the results (you can do this with any editing tool), you can simply **Undo** the action from the Edit menu or the little toolbar above your photo.



The other tool you need to be familiar with is the cropping tool. Cropping your photos involves editing out a portion of the picture that is not needed...such as extra sky, ground or people in your photo. Access the cropping tool from the Rotate and Size tool. Choose the Trim and Size option



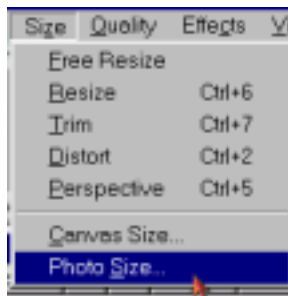
Using any of the tools from the Adobe toolbar actually changes the toolbar and provides step-by-step instructions. Pay attention to these changes and follow through the steps in their numbered order. If you read the instructions carefully in them, you should be able to complete any of their tasks relatively easily.



With Cropping tool, do this:

1. Click on the Trim button
2. Draw a box around the part of the picture you want to keep by using your mouse and clicking and dragging to 'draw' directly on the picture
3. When satisfied with the box you drew, Click on the 'OK' button from the toolbar
4. Click on Done (step 2)

Sending your Photos via Email

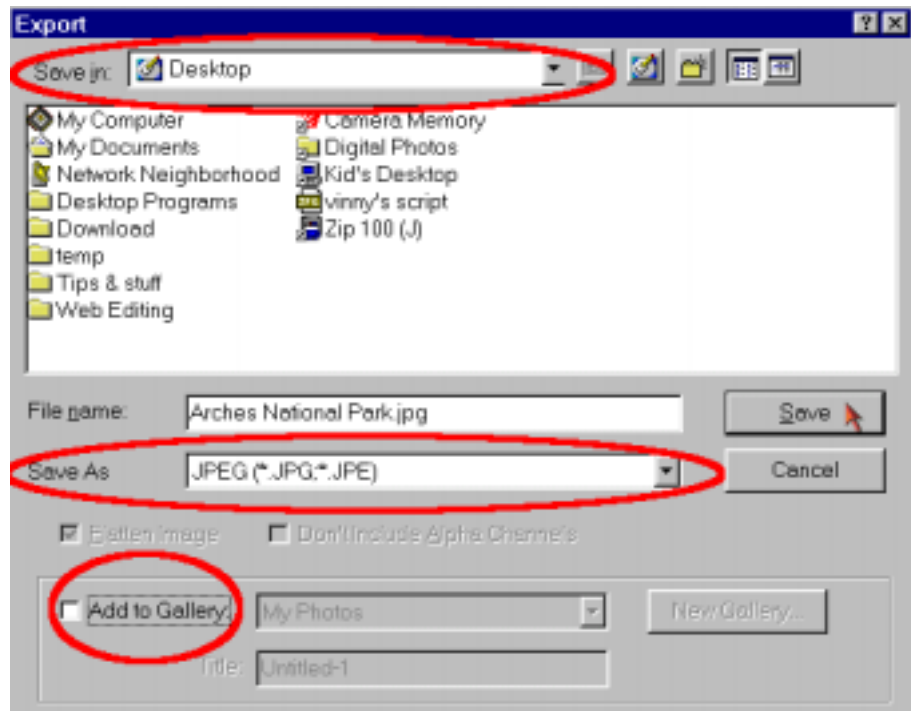


1. With Advanced Menus enabled, Click on Size then Photo Size
2. In the Photo Size dialog box, change the measurement variable from inches to Pixels
3. If your photo is landscape (wider than tall), change the width to 450 pixels
4. If your photo is portrait (taller than wide), change the height to 450 pixels.
5. Click OK

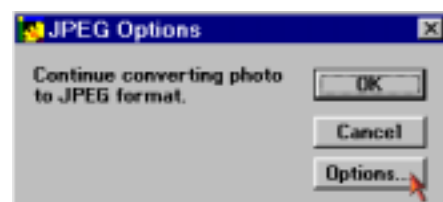
After you have cropped, resized and adjusted your photo, you now need to save it. Note that Adobe Photo Deluxe never modifies the original photo...it imports the photo as a 'untitled document'.

Saving your Photo

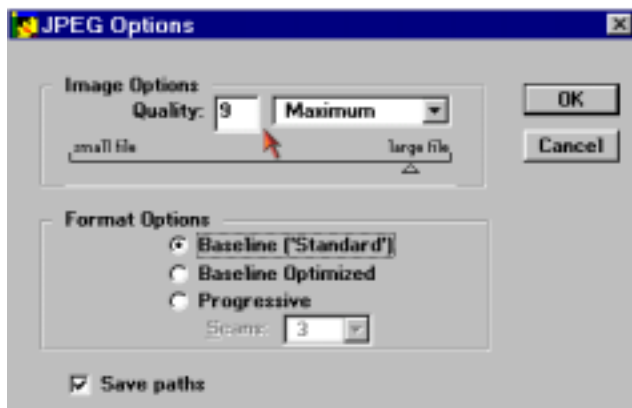
1. Click on File from the menus
2. Click on Export then File Format
3. As always, choose where to save the file in the "Save In" box
4. In the Save AS box, choose JPEG
5. Unclick the "add to gallery" check box
6. Click on Save



You will now be presented with this menu:



Click on the Options button to see this screen:



Type either 8 or 9 in the quality setting and click on OK.

When you close Adobe Photo Deluxe, you will be asked if you want to save the file, choose No. You have already exported the picture to another file, so there is no use having a duplicate on your system.